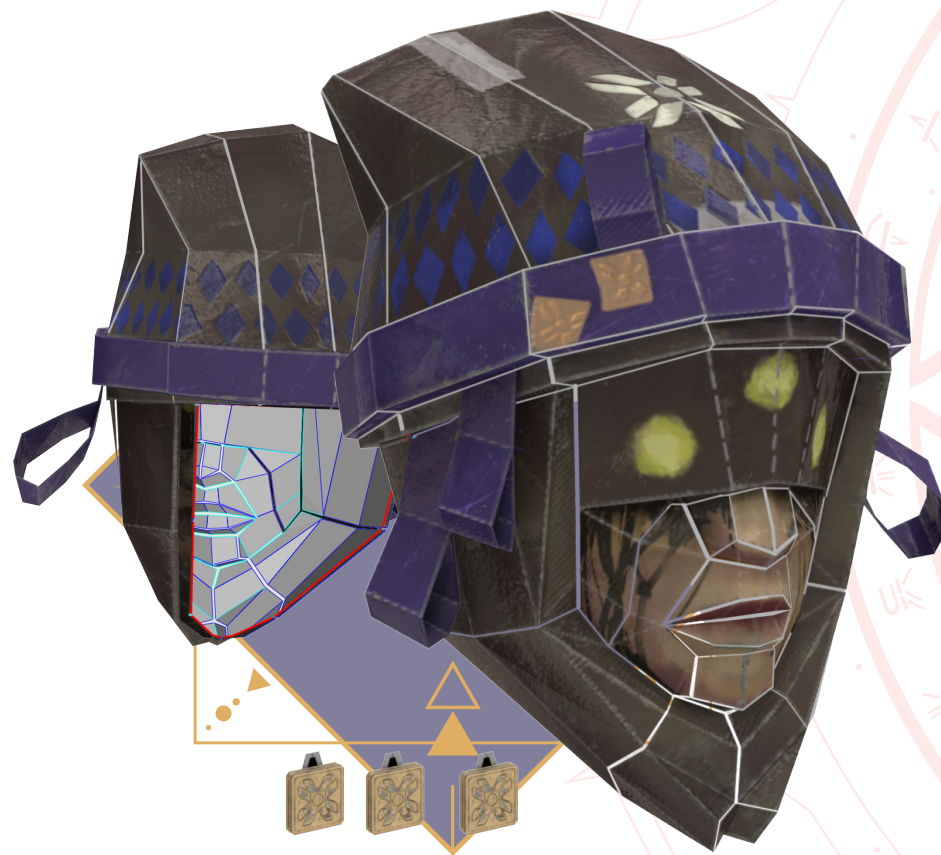


DESTINY 2

SHADOWKEEP

PAPERCRAFT MASKS



Eris Morn (3D)

MSK - 1901



BUNGIE REWARDS



Eris Morn (flat)

MSK - 1901b

INCLUDES: Eris 3D mask (7 pages)
Eris flat mask (1 page)

TOOLS: Paper glue (required)
(not included) Craft knife or scissors
Metal ruler
Cutting mat
Clips (optional)

TIPS: For cutting, use a craft knife and a metal straight edge over a cutting mat or board for best results. // Transcribe the edge number onto the back of the paper to more easily match to the flap that tuck under that edge. // Reduce the width of a flap with a craft knife or scissors if the flap will be glued to a piece thinner than the flap itself. // When folding a flap, use a straight edge

(like a ruler or drafting triangle) to crease the paper. // Use clips to hold pieces together while glue is drying. // Be aware that folds may be valleys or mountains. // Perforation, or holes, will be needed in order to see out while wearing completed masks.

CAUTION: THESE MASKS ARE PROVIDED "AS IS" WITHOUT WARRANTY OF ANY KIND. THESE MASKS ARE NOT TOYS AND ARE NOT INTENDED FOR USE BY CHILDREN UNDER 12. USE CAUTION WHEN WEARING MASKS. DO NOT OPERATE VEHICLES OR MOVE AROUND WHILE WEARING COMPLETED MASKS.



